

Head (mm)	Holotype	Paratype
height	1.3962	1.376
width	1.3143	1.209
width of epicranium	1.1999	1.093
width of frons	0.9048	0.855
length	NA	NA

Measured part of head	height (mm)		width (mm)	
	Holotype	Paratype	Holotype	Paratype
clypeus	0.169	0.172	0.4524	0.45
labrum	0.1846	0.765	0.3068	0.274
from mandible to mandible			0.5798	0.845
lowest distance between genas			0.8801	0.956
from clypeus to bottom part of maxilla	0.5759	0.446		
genas	0.2522	0.253	NA	NA

Measured part of head	Left side (right parts)				Right side (left parts)			
	height (mm)	Paratype	width (mm)	Holotype	height (mm)	Paratype	width (mm)	Holotype
mandibles	0.364	0.447	0.1157	0.147	NA	0.5031	0.594	0.1274
compound eyes, (kidney shaped)	0.52	0.128	0.105	0.122	0.1417	0.548	0.0923	0.065
lateral ocelli, (halfmoon shaped)	0.1378	NA	NA	NA	NA	0.171	NA	0.153
antennal pit	NA	NA	NA	NA	NA	NA	NA	NA

maxillary palps, segments from prox. (sin-calculated)	height (mm)		width (mm)		height (mm)		width (mm)	
	Holotype	Paratype	Holotype	Paratype	Holotype	Paratype	Holotype	Paratype
1. segment	NA	0.031	NA	NA	0.12805	0.03	0.0559	0.021
2. segment	0.0884	0.075	0.065	NA	0.08645	0.0785	0.0611	0.032
3. segment	0.3211	0.1183	0.0832	0.046	0.12948	0.132	0.0754	0.054
4. segment	0.2912	0.1798	0.0624	0.044	0.2704	0.1387	0.0598	0.046
5. segment	0.3016	0.232	0.0871	0.094	0.3484	0.1787	0.1105	0.081

labial palps, segments from prox. (sin-calculated)	height (mm)		width (mm)		height (mm)		width (mm)	
	Holotype	Paratype	Holotype	Paratype	Holotype	Paratype	Holotype	Paratype
1. segment	0.0923	NA	0.065	NA	0.0871	NA	0.0611	NA
2. segment	0.2236	NA	0.0754	NA	0.2301	NA	0.0611	NA
3. segment	0.2886	NA	0.0676	NA	0.26702	NA	0.0689	NA

stipes, galea, paraglossa, mandibular teeth NA NA

Head (mm)	Holotype	Holotype	Paratype	Paratype
	height (mm)	width (mm)	height (mm)	width (mm)
clypeus	0.169	0.4524	0.172	0.45
labrum	0.1846	0.3068	0.765	0.274
from mandible to mandible		0.5798		0.845
lowest distance between genas		0.8801		0.956
from clypeus to bottom part of maxilla	0.5759		0.446	
genas	0.2522	NA	0.253	NA

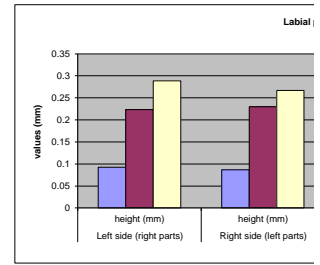
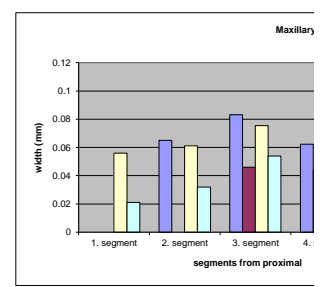
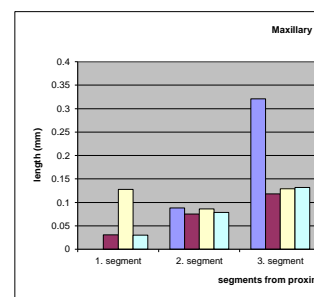
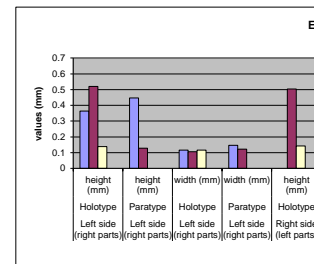
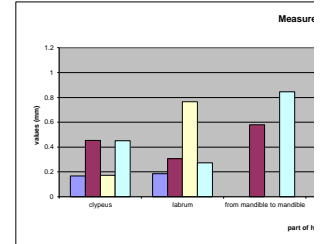
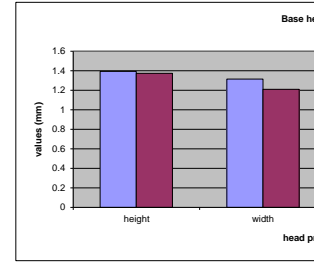
Left side (right parts)	Left side (right parts)		Left side (right parts)		Right side (left parts)		Right side (left parts)	
	height (mm)	Paratype	width (mm)	Holotype	height (mm)	Paratype	width (mm)	Holotype
mandibles	0.364	0.447	0.1157	0.147	NA	0.5031	0.594	0.1274
compound eyes, (kidney shaped)	0.52	0.128	0.105	0.122	0.1417	0.548	0.0923	0.065
lateral ocelli, (halfmoon shaped)	0.1378	NA	NA	NA	NA	0.171	NA	0.153
antennal pit	NA	NA	NA	NA	NA	NA	NA	NA

Left side (right parts)	Left side (right parts)		Right side (left parts)	
	height (mm)	Paratype	width (mm)	Holotype
1. segment	NA	0.031	0.12805	0.03
2. segment	0.0884	0.075	0.08645	0.0785
3. segment	0.3211	0.1183	0.12948	0.132
4. segment	0.2912	0.1798	0.2704	0.1387
5. segment	0.3016	0.232	0.3484	0.1787

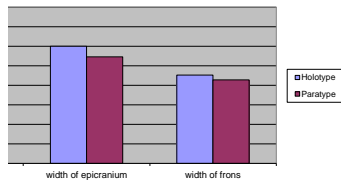
labial palps, segments from prox. (sin-calculated)	height (mm)		width (mm)		height (mm)		width (mm)	
	Holotype	Paratype	Holotype	Paratype	Holotype	Paratype	Holotype	Paratype
1. segment	0.0923	NA	0.065	NA	0.0871	NA	0.0611	NA
2. segment	0.2236	NA	0.0754	NA	0.2301	NA	0.0611	NA
3. segment	0.2886	NA	0.0676	NA	0.26702	NA	0.0689	NA

Left side (right parts)	Left side (right parts)		Right side (left parts)	
	width (mm)	Paratype	width (mm)	Holotype
1. segment	NA	NA	0.0559	0.021
2. segment	0.065	NA	0.0611	0.032
3. segment	0.0832	0.046	0.0754	0.054
4. segment	0.0624	0.044	0.0598	0.046
5. segment	0.0871	0.094	0.1105	0.081

Left side (right parts)	Right side (left parts)		Left side (right parts)	
	height (mm)	Paratype	width (mm)	Holotype
1. segment	0.0923	0.0871	0.065	0.0611
2. segment	0.2236	0.2301	0.0754	0.0611
3. segment	0.2886	0.26702	0.0676	0.0689

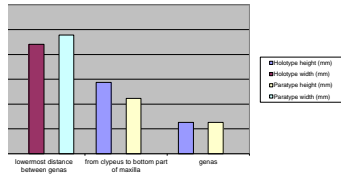


head measuring



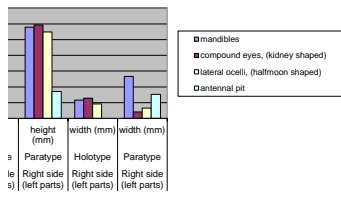
proportions

head part of head



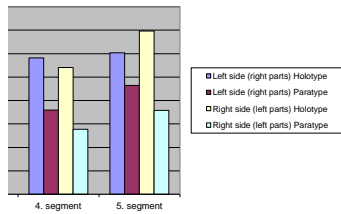
head

Eyes area



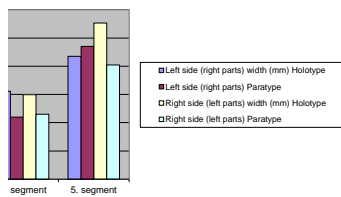
mal

palps segments



mal

palp segments



segment

palps Holotype

